



Supporting Information

for

Development of a mucoadhesive drug delivery system and its interaction with gastric cells

Ahmet Baki Sahin, Serdar Karakurt and Deniz Sezlev Bilecen

Beilstein J. Nanotechnol. **2025**, *16*, 371–384. [doi:10.3762/bjnano.16.28](https://doi.org/10.3762/bjnano.16.28)

Properties of FAM-labeled peptide

Properties of the FAM-labeled peptide

The mass spectrum of the FAM-labeled peptide that was used as a model drug molecule is provided in Figure S1. The emission spectrum ($\lambda_{\text{ex}} = 485 \text{ nm}$) of the purchased FAM-labeled peptide is given in Figure S2.

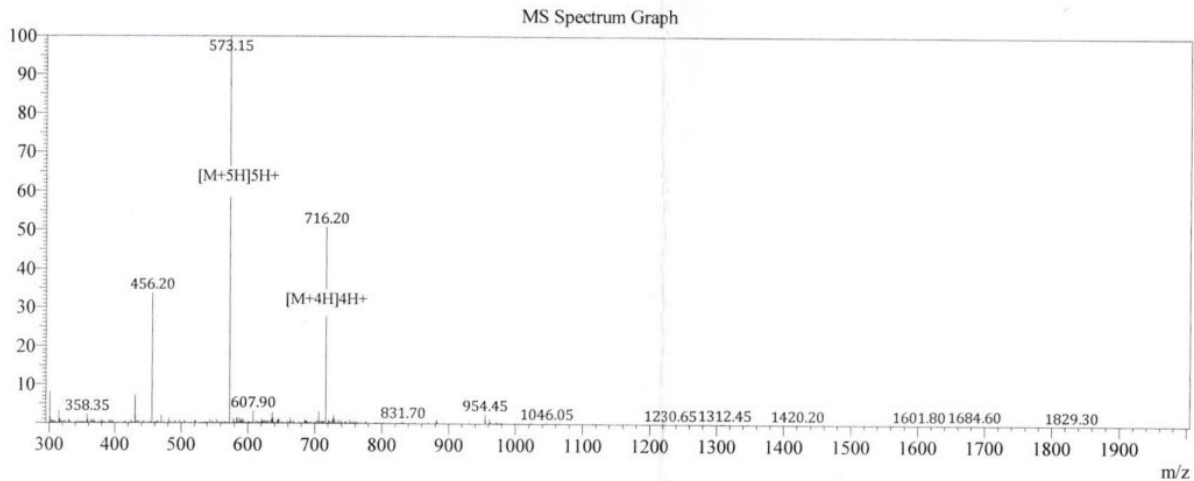


Figure S1: Mass spectrum of the FAM-labeled peptide (sequence: lauric acid–VVAGFSGGNCRGFRRRCFCT{K(5-FAM)}–NH₂). The mass spectrum result of the model peptide is $[M + 4H]^{4+}_{\text{calc}} = 716.34$, $[M + 4H]^{4+}_{\text{obs}} = 716.20$; $[M + 5H]^{5+}_{\text{calc}} = 573.07$, $[M + 5H]^{5+}_{\text{obs}} = 573.15$.

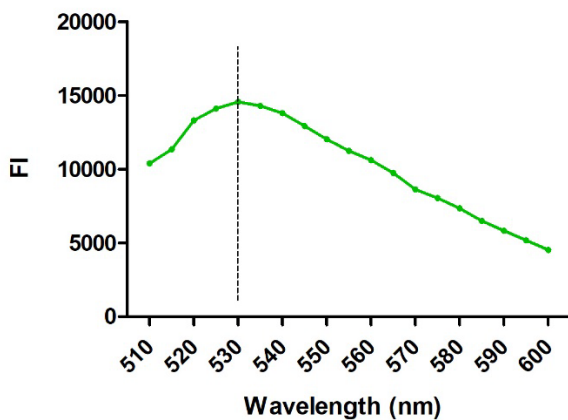


Figure S2: Emission spectrum of the FAM-labeled peptide, $\lambda_{\text{ex}} = 485 \text{ nm}$.