

# Supporting Information

for

## **Tailoring the ligand shell for the control of cellular uptake and optical properties of nanocrystals**

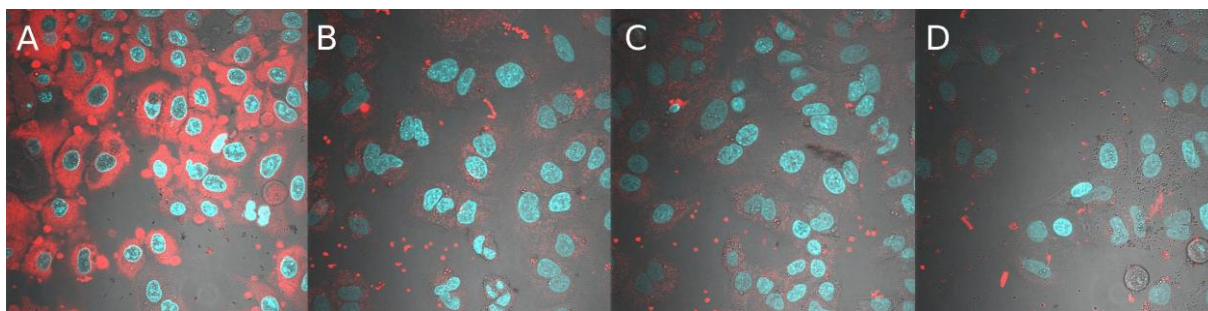
Johannes Ostermann<sup>1</sup>, Christian Schmidtke<sup>1</sup>, Christopher Wolter<sup>1</sup>, Jan-Philip Merkl<sup>1</sup>, Hauke Kloust<sup>1</sup> and Horst Weller\*<sup>1,2,3,4</sup>

Address: <sup>1</sup>Institute for Physical Chemistry, University of Hamburg, Grindelallee 117, 20146 Hamburg, Germany, <sup>2</sup>Center for Applied Nanotechnology, Grindelallee 117, 20146 Hamburg, Germany, <sup>3</sup>The Hamburg Centre for Ultrafast Imaging, University of Hamburg, Luruper Chaussee 149, 22761 Hamburg, Germany and <sup>4</sup>Department of Chemistry, Faculty of Science, King Abdulaziz University, Jeddah, Saudi Arabia

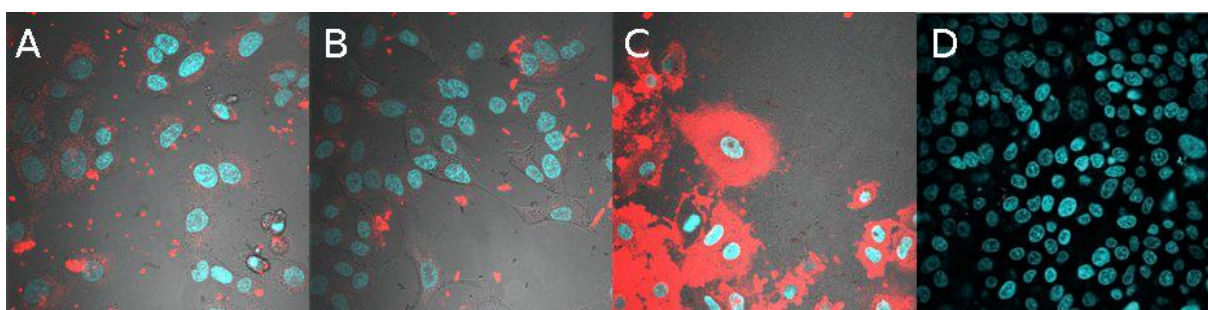
Email: Horst Weller - [weller@chemie.uni-hamburg.de](mailto:weller@chemie.uni-hamburg.de)

\* Corresponding author

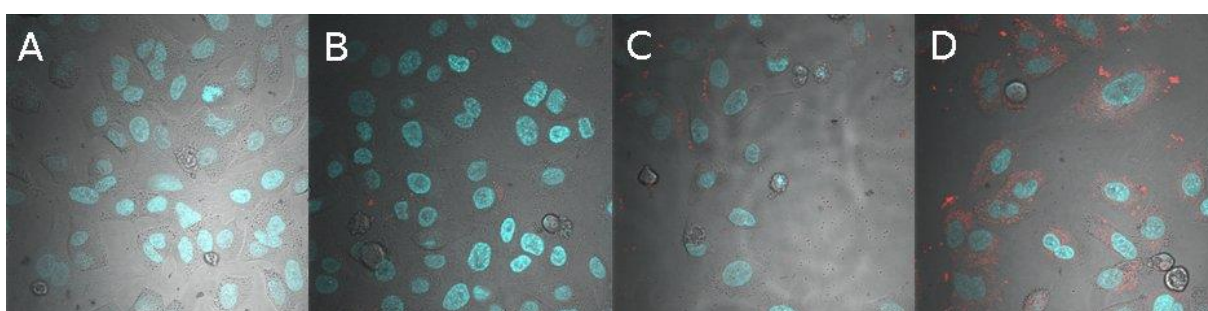
**Additional information about the conducted cell culture experiments available**



**Figure S1:** Confocal microscopy images of A549 cells, incubated with methoxy-functionalized nanocontainers under serum-free conditions for 20 h. 4300 g/mol PI-*b*-PEG (A); 6600 g/mol PI-*b*-PEG (B); 9000 g/mol PI-*b*-PEG (C); 13400 g/mol PI-*b*-PEG (D).



**Figure S2:** Confocal microscopy images of A549 cells, incubated with amine-functionalized nanocontainers under serum-free conditions for 20 h. 4300 g/mol PI-*b*-PEG (A); 6600 g/mol PI-*b*-PEG (B); 9000 g/mol PI-*b*-PEG (C); 10500 g/mol PI-*b*-PEG (D).



**Figure S3:** Confocal microscopy images of A549 cells, incubated with carboxy-functionalized nanocontainers under serum-free conditions for 20 h. 4300 g/mol PI-*b*-PEG (A); 6600 g/mol PI-*b*-PEG (B); 9000 g/mol PI-*b*-PEG (C); 13400 g/mol PI-*b*-PEG (D).