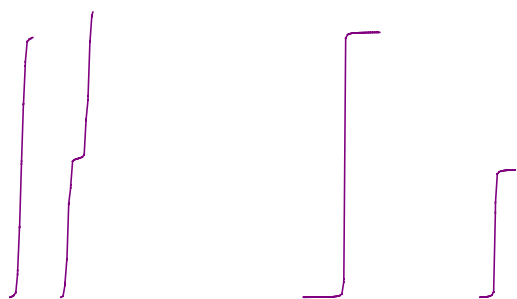
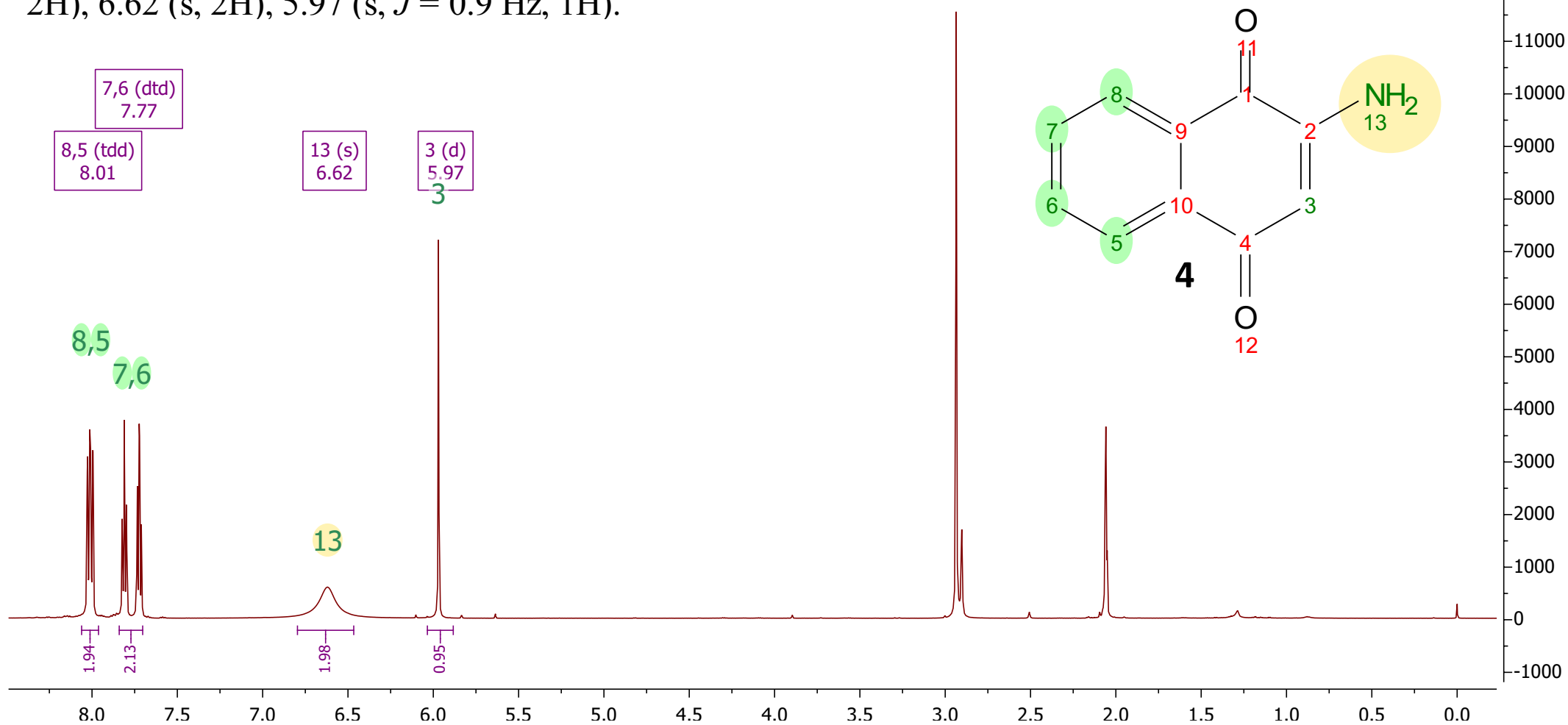


¹H



¹H NMR (600 MHz, acetone) δ 8.01 (tdd, $J = 19.0, 13.2, 9.3$ Hz, 2H), 7.77 (dtd, $J = 52.5, 7.5, 1.3$ Hz, 2H), 6.62 (s, 2H), 5.97 (s, $J = 0.9$ Hz, 1H).



182.20
182.01

149.88

134.34

133.55

131.93

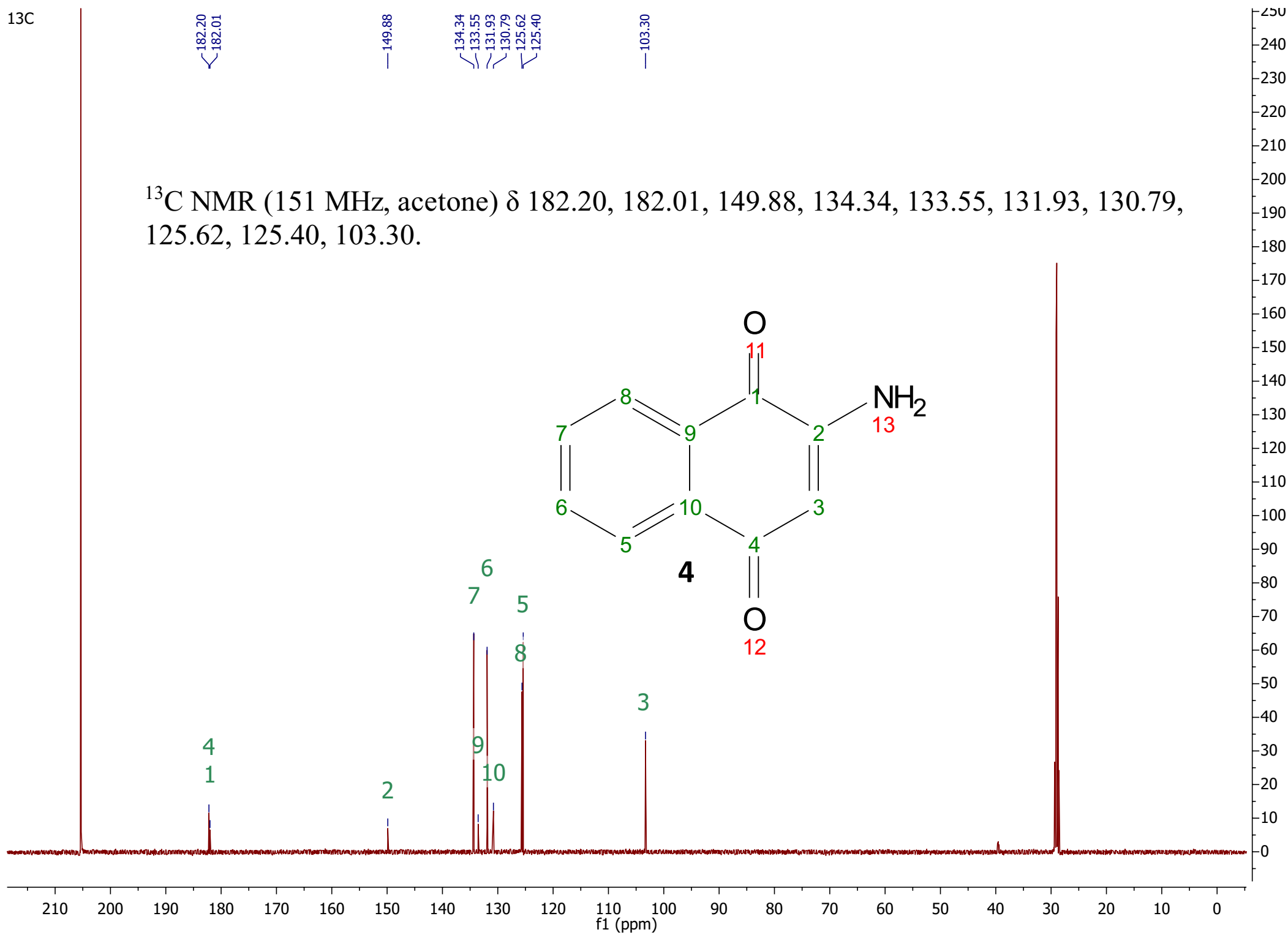
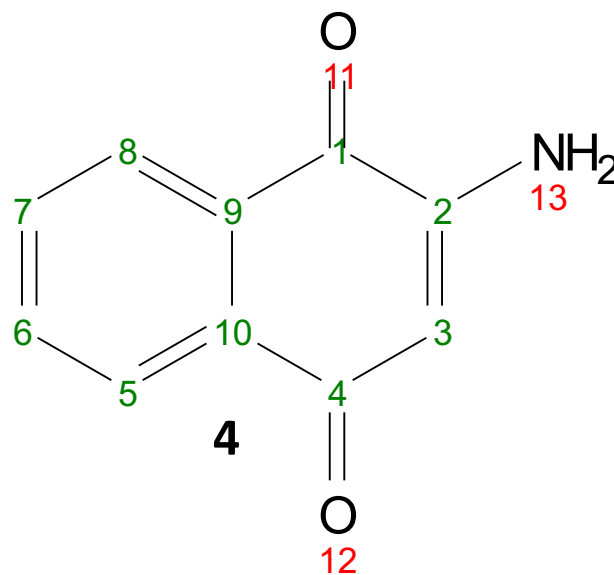
130.79

125.62

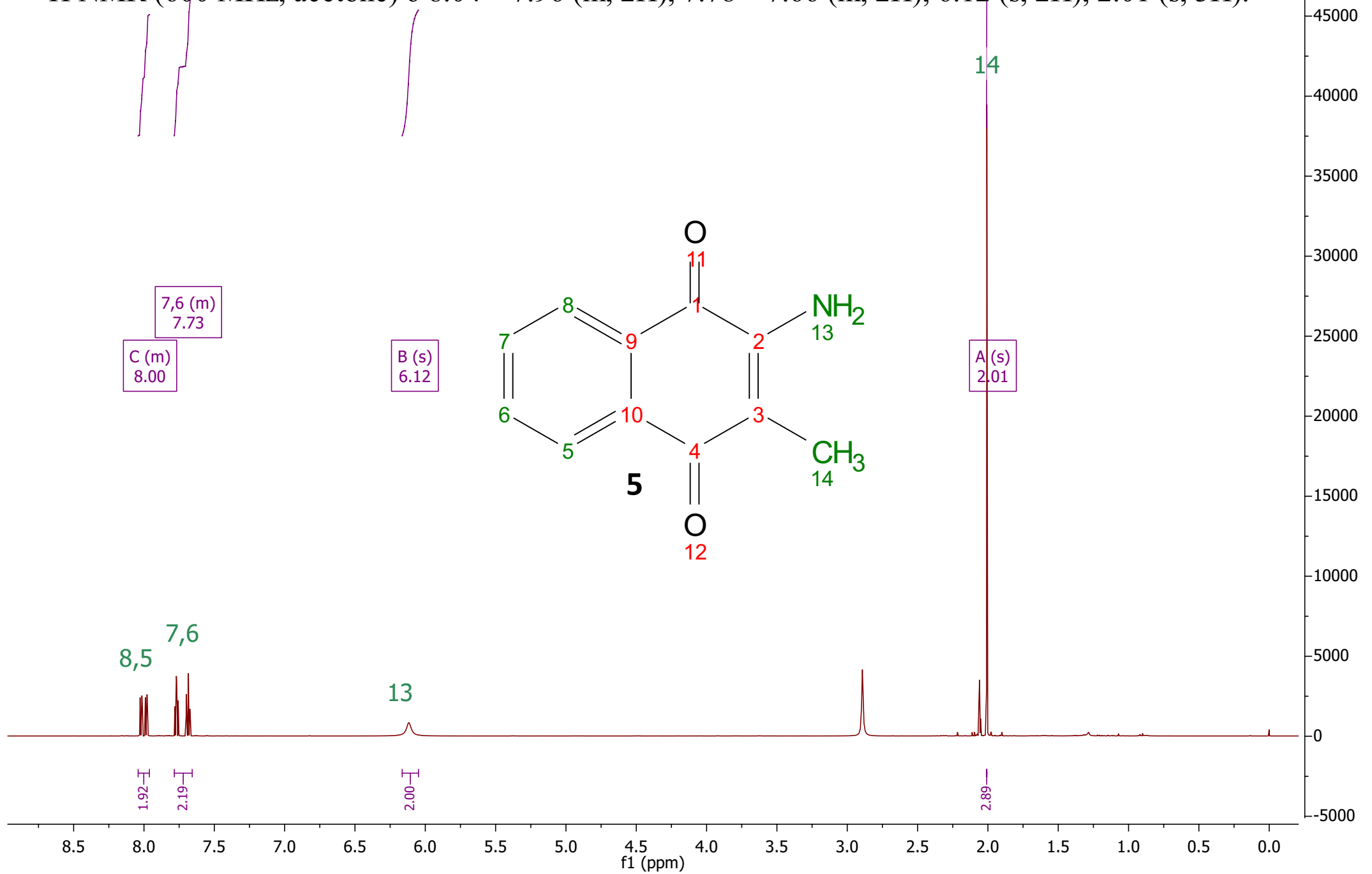
125.40

103.30

^{13}C NMR (151 MHz, acetone) δ 182.20, 182.01, 149.88, 134.34, 133.55, 131.93, 130.79, 125.62, 125.40, 103.30.



^1H NMR (600 MHz, acetone) δ 8.04 – 7.96 (m, 2H), 7.78 – 7.66 (m, 2H), 6.12 (s, 2H), 2.01 (s, 3H).



181.64
181.18

146.29

134.03

133.36

131.83

130.64

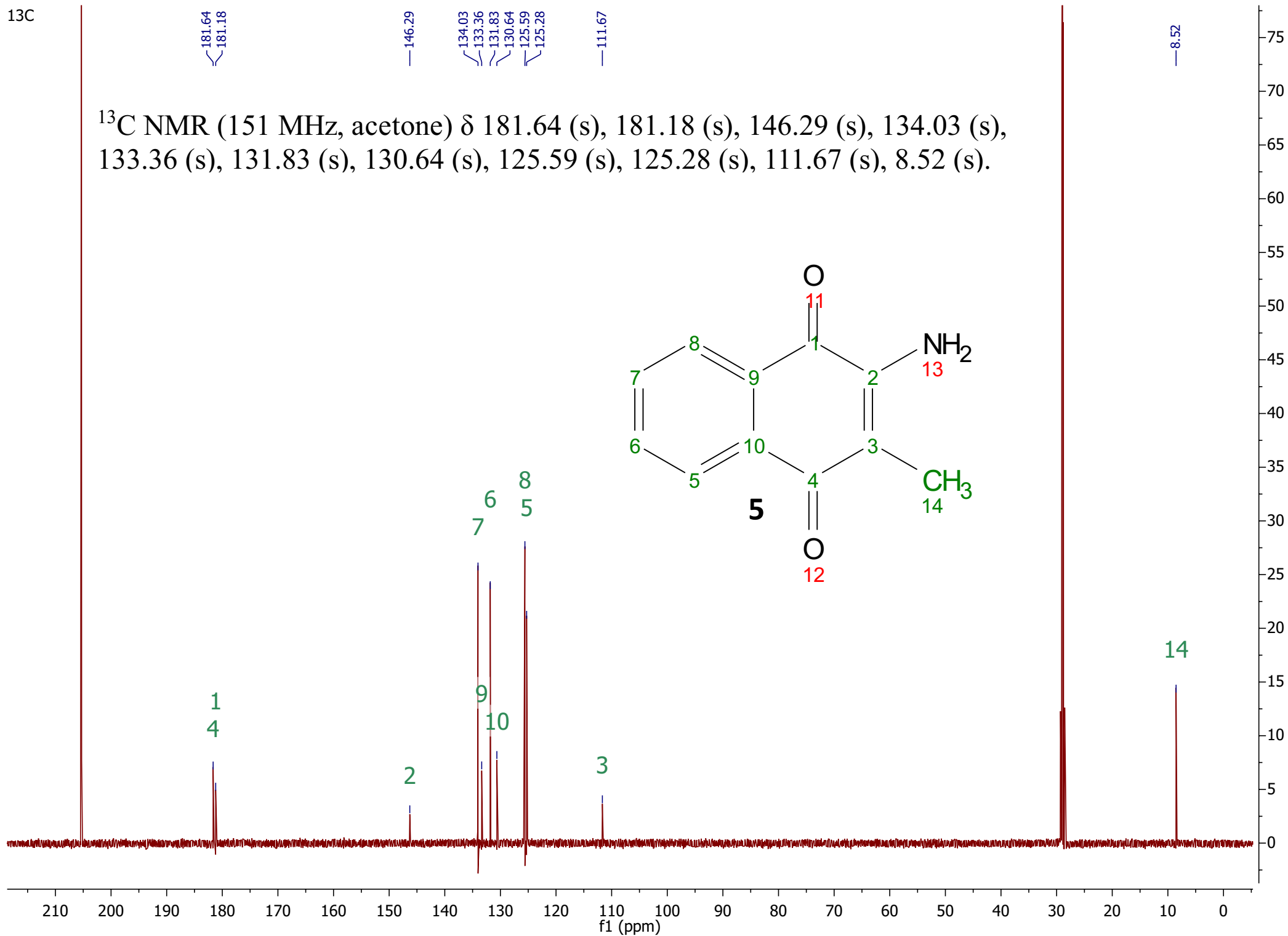
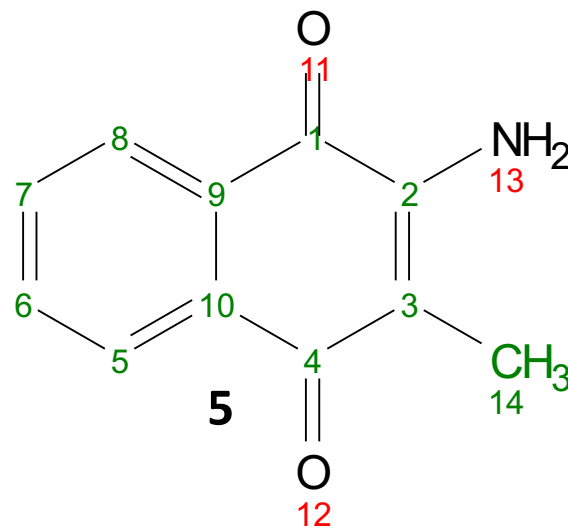
125.59

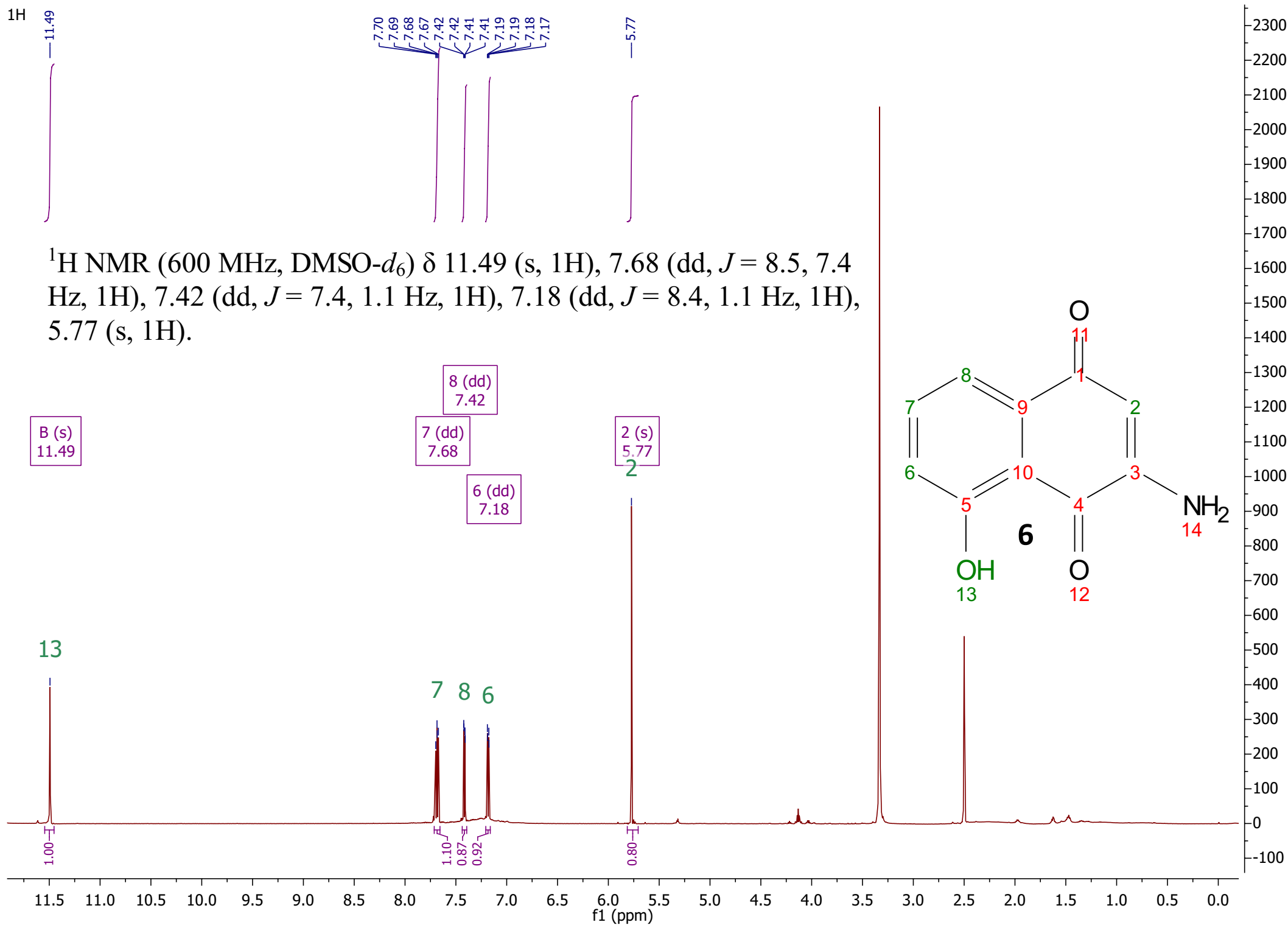
125.28

111.67

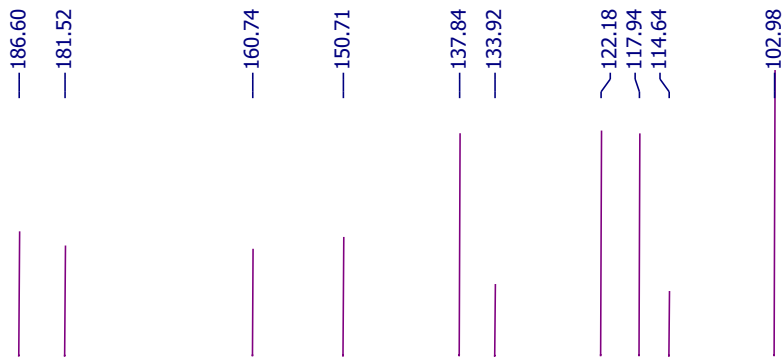
8.52

^{13}C NMR (151 MHz, acetone) δ 181.64 (s), 181.18 (s), 146.29 (s), 134.03 (s), 133.36 (s), 131.83 (s), 130.64 (s), 125.59 (s), 125.28 (s), 111.67 (s), 8.52 (s).





¹³C



¹³C NMR (151 MHz, dmsO) δ 186.60, 181.52, 160.74, 150.71, 137.84, 133.92, 122.18, 117.94, 114.64, 102.98.

