

Supporting Information

Divergent Role of PIDA and PIFA in the AlX_3 ($X=Cl, Br$) Halogenation of 2 Naphthol: A Mechanistic Study

Kevin A. Juárez-Ornelas,¹ Manuel Solís-Hernández,² Pedro Navarro-Santos,^{2,*} J. Oscar C. Jiménez-Halla^{1*} and César R. Solorio-Alvarado,^{1,*}

¹ Departamento de Química, División de Ciencias Naturales y Exactas, Universidad de Guanajuato, Campus Gto, Noria Alta S/N 36050, Guanajuato, Guanajuato, Mexico.

² CONAHCYT - Instituto de Investigaciones Químico Biológicas, Universidad Michoacana de San Nicolás de Hidalgo. Francisco J. Mujica S/N 58030, Morelia, Michoacán, México.

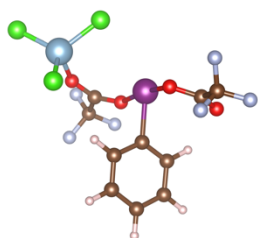
INDEX	PAGE
1. Computational details	S2
2. Reaction mechanism for the chlorination of 2-naphthol using the PIFA- $AlCl_3$ (1:2) system. Geometries of intermediates and transitions states.	S2
3. Reaction mechanism for the bromination of 2-naphthol using the PIDA- $AlCl_3$ (1:2) system. Geometries of intermediates and transitions states.	S5
4. Alternative mechanisms explored for the chlorination of 2-naphthol	
a. The PIFA- $AlCl_3$ (1:1) system	S11
b. The PIFA- $AlCl_3$ (1:2) system via the formation of $PhICl_2$	S13
c. The PIDA- $AlCl_3$ (1:2) system via the formation of $PhICl_2$	S15
5. Alternative mechanisms explored for the bromination of 2-naphthol	
a. The PIFA- $AlBr_3$ (1:2) system	S18
b. The PIFA- $AlBr_3$ (1:2) system via the formation of $PhIBr_2$	S21
c. The PIDA- $AlBr_3$ (1:2) system via the formation of $PhIBr_2$	S24

1. Computational details

The geometric optimization of reagents, adducts, transition states, and products was carried out employing the Gaussian 161 software at the gas phase. The potential energy surface was explored by using DFT calculations at the level of theory ω -B97XD/(6-311G(d,p),LANL08d)// ω -B97XD/6-31G(d). Once the critical points were found, the solvent effects were considered by performing energy calculations over each geometry using the polarizable continuum model (PCM) using the SMD proposed model of Truhlar and coworkers². The geometries of the critical points of the proposed mechanisms are the following:

2. Reaction mechanism for the chlorination of 2-naphthol using the PIFA- AlCl_3 (1:2) system. Geometries of intermediates and transition states.

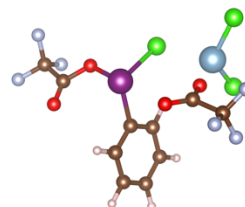
Reagents



I	-0.715876	-0.166764	-0.538108
C	-1.140209	1.555499	0.561082
C	-0.766600	1.570977	1.899351
C	-1.759824	2.623374	-0.075213
C	-1.036188	2.721874	2.629104
H	-0.277442	0.721290	2.361566
C	-2.016728	3.760240	0.678462
H	-2.046658	2.567005	-1.116950
C	-1.656011	3.807506	2.021096
H	-0.757162	2.764636	3.675395
H	-2.500769	4.609976	0.211430
H	-1.860619	4.701650	2.599260
O	3.006426	-0.042313	-0.092155
C	2.423303	0.886642	-0.684759
O	1.223533	1.005913	-0.988438
C	3.334480	2.083058	-1.061627
F	3.616245	2.766678	0.050565
F	4.468417	1.651033	-1.597470
F	2.736673	2.898461	-1.919193
O	-3.644695	0.406992	-1.415822
C	-3.606185	-0.509040	-0.650179
O	-2.536362	-1.013560	-0.058681
C	-4.869255	-1.280262	-0.191760
F	-4.743266	-2.579965	-0.449764
F	-5.938139	-0.820118	-0.822479
F	-5.043994	-1.120102	1.121006

Al	2.780476	-1.774238	0.543400
Cl	1.697535	-2.708838	-1.055279
Cl	4.702110	-2.545019	0.884673
Cl	1.573446	-1.499104	2.286387

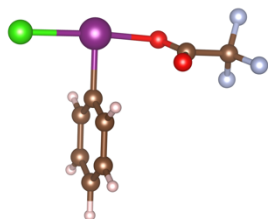
TS1-Cl



I	0.867926	-0.159466	-1.021628
C	0.694023	-1.483450	0.581382
C	0.217869	-1.017159	1.799471
C	1.012398	-2.816849	0.344727
C	0.043568	-1.942112	2.820456
H	0.009598	0.031669	1.964762
C	0.820363	-3.720356	1.379397
H	1.407531	-3.139729	-0.609496
C	0.334847	-3.284277	2.608468
H	-0.330675	-1.601509	3.778661
H	1.055962	-4.766476	1.222785
H	0.187757	-3.999338	3.410234
O	-2.313161	0.208681	-0.182512
C	-2.453519	-0.763364	-0.994159
O	-1.570775	-1.297069	-1.640042
C	-3.899886	-1.303442	-1.086975
F	-4.224307	-1.879974	0.074207
F	-4.750336	-0.302215	-1.310876
F	-4.024658	-2.197042	-2.055060
O	3.778498	-1.244551	-0.701749
C	3.709395	-0.078956	-0.473453
O	2.622284	0.692298	-0.488854
C	4.933690	0.794107	-0.090396
F	5.104354	1.759652	-0.991887

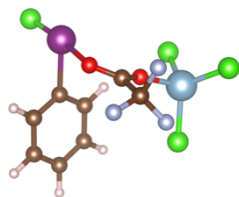
F	6.023027	0.042866	-0.056945
F	4.753584	1.347193	1.104807
Al	-2.301016	1.768595	0.670258
Cl	0.261620	2.178457	0.502380
Cl	-3.285943	3.254403	-0.410357
Cl	-2.679402	1.438983	2.705595

I-1-Cl



I	0.852585	-1.184867	-0.109129
C	1.191965	0.884745	-0.062962
C	1.569170	1.515612	-1.239357
C	1.019383	1.555982	1.137760
C	1.785888	2.886927	-1.201403
H	1.695957	0.962108	-2.161467
C	1.242249	2.927528	1.149535
H	0.699991	1.036390	2.030850
C	1.623616	3.587812	-0.011968
H	2.081221	3.404307	-2.107002
H	1.111348	3.476550	2.074873
H	1.794016	4.658479	0.008927
O	-1.214276	-0.690183	-0.577445
C	-1.952988	-0.245541	0.394579
O	-1.636009	-0.040817	1.537541
C	-3.395396	0.029854	-0.099752
F	-3.388786	0.969760	-1.052173
F	-3.939851	-1.077576	-0.613712
F	-4.168012	0.451323	0.893888
Cl	3.247016	-1.578880	0.282721

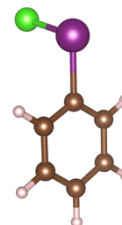
I-2-Cl



I	2.027269	-0.658431	-0.918673
C	1.875503	0.244562	0.968834
C	1.275935	1.491476	1.049061
C	2.337251	-0.463836	2.070291
C	1.134618	2.054713	2.311096
H	0.913577	2.009709	0.169349
C	2.182532	0.123731	3.318337
H	2.795439	-1.439635	1.968420
C	1.583280	1.373940	3.435754
H	0.647358	3.017356	2.405426
H	2.529547	-0.402223	4.200199

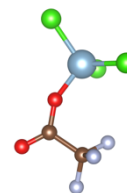
H	1.458043	1.818968	4.416210
O	-1.133595	-0.242164	-0.306512
C	-0.881373	-1.425882	-0.008280
O	0.233160	-1.965388	-0.129053
C	-2.020813	-2.329147	0.527787
F	-2.938965	-1.603334	1.150489
F	-2.587207	-2.957914	-0.500998
F	-1.543317	-3.234106	1.373209
Cl	3.942469	0.614603	-1.554066
Al	-2.258618	1.231679	-0.493219
Cl	-4.015448	0.532184	-1.429718
Cl	-2.454652	1.983380	1.482797
Cl	-1.032364	2.474664	-1.723433

I-3-Cl (cation)

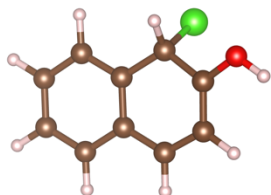


I	2.045080	-0.544362	-0.932900
C	1.849314	0.285537	0.957253
C	1.212787	1.522985	1.070145
C	2.351464	-0.430513	2.045543
C	1.076734	2.055656	2.342357
H	0.837028	2.056360	0.205417
C	2.198486	0.131428	3.303142
H	2.844324	-1.387572	1.924856
C	1.567058	1.364408	3.447618
H	0.587914	3.014215	2.467647
H	2.576178	-0.396345	4.170480
H	1.454682	1.792891	4.436848
Cl	4.101772	0.320243	-1.598168

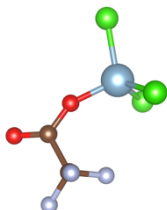
I-3-Cl (anion)



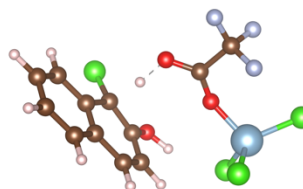
O	-1.097329	-0.287438	-0.413100
C	-0.794318	-1.457448	0.030496
O	0.295522	-1.961748	0.066106
C	-2.012293	-2.294438	0.511133
F	-2.907286	-1.560446	1.181417
F	-2.641185	-2.840921	-0.543063
F	-1.632264	-3.294603	1.312070
Al	-2.174212	1.129173	-0.511512
Cl	-4.052609	0.546719	-1.381173
Cl	-2.428989	1.926602	1.469360
Cl	-1.188230	2.558521	-1.778665

I-4-Cl (cation)

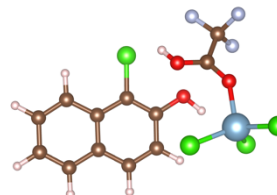
Cl	1.491701	-1.665900	0.852624
C	-2.825305	-1.045598	-0.419419
C	-1.468078	-1.297089	-0.620586
C	-0.539203	-0.316673	-0.331131
C	-0.973723	0.932295	0.160701
C	-2.344306	1.168715	0.366019
C	-3.265300	0.179160	0.078484
C	0.929591	-0.579924	-0.484648
C	-0.019178	1.958882	0.393415
C	1.803220	0.634196	-0.378810
H	1.156781	-1.106158	-1.413041
H	-3.547738	-1.818830	-0.655623
H	-1.147181	-2.263427	-0.995129
H	-2.672842	2.131592	0.743344
H	-4.322793	0.355291	0.233204
H	-0.378931	2.908698	0.780457
C	1.329283	1.837718	0.122337
H	2.000473	2.676871	0.270241
O	3.022647	0.427744	-0.767454
H	3.610122	1.184229	-0.636596

I-4-Cl (anion)

O	-1.097329	-0.287438	-0.413100
C	-0.794318	-1.457448	0.030496
O	0.295522	-1.961748	0.066106
C	-2.012293	-2.294438	0.511133
F	-2.907286	-1.560446	1.181417
F	-2.641185	-2.840921	-0.543063
F	-1.632264	-3.294603	1.312070
Al	-2.174212	1.129173	-0.511512
Cl	-4.052609	0.546719	-1.381173
Cl	-2.428989	1.926602	1.469360
Cl	-1.188230	2.558521	-1.778665

TS2-Cl

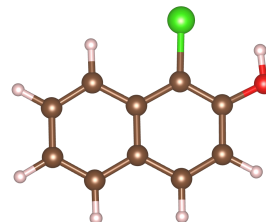
O	1.228023	0.201738	-0.429031
C	0.623347	1.296799	-0.538860
O	-0.572370	1.429136	-0.831059
C	1.429970	2.600198	-0.316478
F	2.283367	2.762999	-1.324403
F	0.634134	3.654705	-0.251051
F	2.117037	2.508666	0.820956
Cl	-2.641515	-0.543891	-2.718478
Al	2.624709	-0.724788	0.358952
Cl	4.464979	0.153428	-0.150008
Cl	2.091818	-0.758599	2.414495
Cl	2.373773	-2.680380	-0.531502
C	-4.737966	0.807613	2.054905
C	-3.653472	0.023929	2.363250
C	-2.831784	-0.491315	1.340939
C	-3.123299	-0.191252	-0.009550
C	-4.230075	0.616067	-0.304455
C	-5.024659	1.097779	0.713199
H	-1.502225	-1.550068	2.682323
H	-5.370877	1.200722	2.842083
H	-3.416852	-0.209090	3.396386
C	-1.725331	-1.339414	1.641159
C	-2.179778	-0.653401	-1.025184
H	-4.461817	0.854992	-1.334348
H	-5.883912	1.713084	0.469700
C	-1.212117	-1.638425	-0.687921
C	-0.947639	-1.903706	0.678723
H	-1.276575	0.351687	-0.913259
H	-0.134572	-2.569170	0.942194
O	-0.522110	-2.178536	-1.656179
H	0.309295	-2.574690	-1.335799

I-5-Cl

O	-2.465281	0.342861	-0.433286
C	-1.677642	1.259851	-0.605200
O	-0.657865	1.177527	-1.380109
C	-2.045101	2.617193	0.046768

F	-2.264795	2.469506	1.336800
F	-1.074566	3.510347	-0.144814
F	-3.150053	3.063340	-0.540543
Cl	1.910825	2.406771	-0.056046
Al	-2.535644	-1.561977	-0.261858
Cl	-4.433340	-2.057224	-1.003924
Cl	-0.851348	-2.303066	-1.290962
Cl	-2.304795	-1.661957	1.867237
C	5.787370	-1.249820	-0.640844
C	4.799736	-1.910871	0.035383
C	3.590236	-1.259248	0.377093
C	3.405047	0.099988	0.005383
C	4.445483	0.760356	-0.693813
C	5.603521	0.100117	-1.005120
H	2.703526	-2.970367	1.356442
H	6.710554	-1.757590	-0.897114
H	4.928461	-2.950365	0.320570
C	2.562056	-1.930212	1.083015
C	2.177907	0.720802	0.361894
H	4.322878	1.797657	-0.979272
H	6.389962	0.622622	-1.539207
C	1.195720	0.052531	1.048906
C	1.400951	-1.299017	1.410912
H	-0.006051	1.890680	-1.238649
H	0.612897	-1.829571	1.934494
O	0.034870	0.690663	1.358412
H	-0.522440	0.118545	1.900338

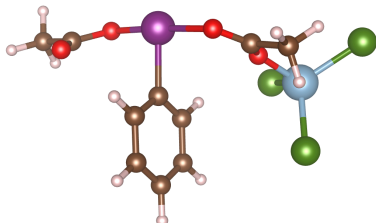
Product



C	3.281358	-0.121724	-0.000046
C	2.533034	1.023815	-0.000125
C	1.118876	0.970694	-0.000095
C	0.473112	-0.295722	0.000019
C	1.272207	-1.465259	0.000098
C	2.638899	-1.376558	0.000067
H	0.830149	3.114482	-0.000263
H	4.364623	-0.068251	-0.000070
H	3.016247	1.996276	-0.000214
C	0.330671	2.150918	-0.000176
C	-0.947617	-0.313546	0.000043
H	0.792770	-2.436488	0.000186
H	3.233417	-2.284143	0.000129
C	-1.692822	0.841796	-0.000038
C	-1.029136	2.091863	-0.000150
H	-1.642481	2.985366	-0.000212
O	-3.038803	0.876993	-0.000021
H	-3.388876	-0.019404	0.000038
Cl	-1.809818	-1.843615	0.000176

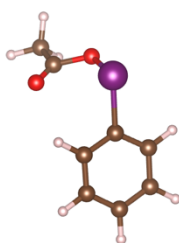
3. Reaction mechanism for the bromination of 2-naphthol using the PIDA-AlCl₃ (1:2) system. Geometries of intermediates and transition states.

Reagents

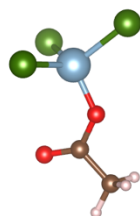


I	-2.263209	-1.078661	-0.570870
C	-2.004985	0.968363	-0.226948
C	-1.166625	1.355920	0.806902
C	-2.664751	1.865353	-1.056092
C	-0.969506	2.716756	1.004533
H	-0.663594	0.631866	1.435715
C	-2.450989	3.219348	-0.836415
H	-3.336757	1.523444	-1.832058
C	-1.604145	3.640615	0.183964
H	-0.296898	3.042702	1.788830
H	-2.951704	3.944965	-1.467189
H	-1.435951	4.700402	0.339236
O	0.882019	-0.582209	-0.690706
C	0.510137	-0.584914	-1.902107

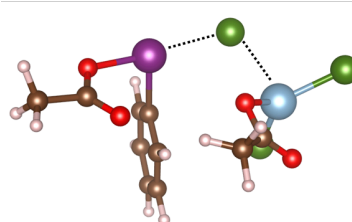
O	-0.693305	-0.800166	-2.202692
C	1.487175	-0.329671	-3.004545
O	-5.128850	-0.076648	-0.381454
C	-4.882754	-0.654780	0.643882
O	-3.691776	-1.220866	0.906801
C	-5.834613	-0.840485	1.793802
Al	2.381537	-0.140038	0.291061
Br	1.723838	-0.574236	2.456837
Br	4.089899	-1.481158	-0.470007
Br	2.676693	2.109691	-0.151282
H	2.305621	-1.049589	-2.935420
H	1.001242	-0.394941	-3.974606
H	1.923136	0.663612	-2.866378
H	-5.986540	-1.904701	1.982505
H	-6.784027	-0.363263	1.560900
H	-5.407810	-0.405308	2.699124

I-1-Br (cation)

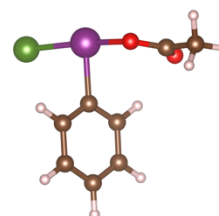
I	-0.610262	-1.131574	-0.204055
C	1.205207	-0.158329	-0.024878
C	1.574307	0.747217	-1.021273
C	2.009720	-0.465958	1.074377
C	2.811617	1.359701	-0.900886
H	0.913862	0.981175	-1.846655
C	3.240905	0.164513	1.164897
H	1.693305	-1.169690	1.834684
C	3.636977	1.067980	0.182541
H	3.129458	2.069085	-1.655376
H	3.891129	-0.052152	2.003862
H	4.602243	1.554325	0.263725
O	-1.601929	1.541072	-0.959859
C	-2.115977	1.286514	0.082208
O	-1.844436	0.099420	0.753307
C	-3.086537	2.097690	0.881287
H	-3.256187	3.041410	0.368127
H	-4.026404	1.553472	0.987576
H	-2.689913	2.275880	1.881773

I-1-Br (anion)

O	-1.307517	-0.032026	1.146309
C	-2.590953	-0.014221	0.857457
O	-3.056461	0.031643	-0.256281
C	-3.453626	-0.064595	2.104180
H	-3.270948	-1.002828	2.634457
H	-3.177060	0.747451	2.780441
H	-4.507645	0.009927	1.838568
Al	0.111202	-0.001305	0.065304
Br	0.175272	-1.896440	-1.299865
Br	0.193572	1.972242	-1.181246
Br	1.936566	-0.054705	1.538469

TS1-Br

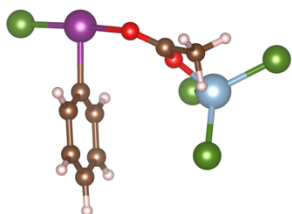
I	1.961573	-0.835124	-0.900981
C	1.668100	1.161101	-0.350960
C	1.562395	2.108924	-1.359877
C	1.575465	1.470528	0.999327
C	1.364445	3.430642	-0.986687
H	1.606212	1.830558	-2.405261
C	1.390278	2.801931	1.344079
H	1.654380	0.703176	1.755651
C	1.283096	3.774208	0.357604
H	1.261924	4.189303	-1.753528
H	1.303762	3.070131	2.390370
H	1.116492	4.808115	0.637465
O	-0.632536	-0.904713	1.132236
C	-0.886658	-0.761654	2.411009
O	-1.917681	-0.190223	2.748062
C	0.103693	-1.344110	3.371250
O	3.383066	-1.037081	1.809891
C	4.227358	-0.965113	0.957761
O	3.959112	-0.825758	-0.353154
C	5.713222	-1.008716	1.192297
Al	-2.110200	-0.150863	0.356121
Br	-0.949498	-0.754623	-2.101682
Br	-4.000596	-1.401659	0.179612
Br	-2.165812	2.123991	0.140435
H	1.119589	-1.286242	2.979609
H	0.024991	-0.849606	4.337911
H	-0.136236	-2.402576	3.506117
H	6.172547	-0.090810	0.821774
H	6.152289	-1.842108	0.641500
H	5.905928	-1.121169	2.256918

I-2-Br

I	-0.174477	-0.954267	-0.218112
C	0.148754	1.119252	-0.105694
C	-0.188113	1.899273	-1.202323
C	0.680868	1.644891	1.061435
C	0.021155	3.269584	-1.118337
H	-0.613275	1.459305	-2.095936
C	0.882375	3.019100	1.120878

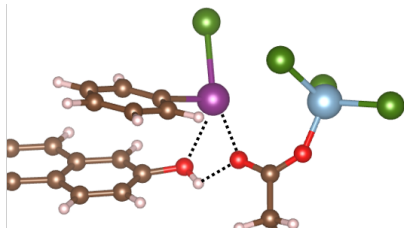
H	0.954676	1.002376	1.887231
C	0.553288	3.826353	0.039084
H	-0.236621	3.900618	-1.961471
H	1.299084	3.454565	2.021998
H	0.711639	4.897551	0.098512
Br	-2.746778	-0.537175	0.277849
O	2.503597	-0.845847	1.369149
C	2.782976	-1.067786	0.212124
O	1.898229	-1.146310	-0.768026
C	4.193553	-1.279049	-0.285219
H	4.272890	-2.246566	-0.784163
H	4.890529	-1.231494	0.549372
H	4.441817	-0.511509	-1.021009

I-3-Br



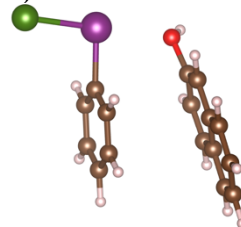
I	2.384800	-0.749225	0.792647
C	1.784464	1.181914	0.204222
C	1.215556	1.334704	-1.048615
C	1.925814	2.214956	1.117778
C	0.762900	2.599535	-1.399180
H	1.096482	0.501132	-1.728571
C	1.461744	3.469566	0.741538
H	2.369777	2.056435	2.092549
C	0.882792	3.658175	-0.507816
H	0.286256	2.739319	-2.361865
H	1.550361	4.297520	1.435484
H	0.507406	4.636805	-0.783745
O	-0.794038	-0.569885	0.792434
C	-0.484383	-0.456837	2.016344
O	0.717521	-0.529867	2.382150
C	-1.533630	-0.224725	3.056791
Al	-2.259260	-0.264468	-0.286362
Br	-1.497494	-0.786092	-2.397981
Br	-3.933465	-1.650639	0.472523
Br	-2.695542	1.985395	0.025894
H	-2.301755	-0.996835	2.979708
H	-1.094848	-0.215807	4.051277
H	-2.021846	0.732588	2.853319
Br	4.329494	-0.819230	-0.880687

TS2-Br



I	-0.271411	0.648683	-0.377844
C	-1.497555	0.066728	1.227569
C	-1.020030	-0.916040	2.080439
C	-2.749389	0.648860	1.378195
C	-1.852027	-1.350248	3.107514
H	-0.025040	-1.326083	1.962218
C	-3.560464	0.204492	2.411684
H	-3.093670	1.422777	0.704801
C	-3.115921	-0.797495	3.267851
H	-1.496798	-2.112858	3.791403
H	-4.545951	0.638226	2.536386
H	-3.757349	-1.142424	4.071442
O	0.441782	-1.627063	-0.633867
C	1.472232	-2.338248	-0.696292
O	2.655029	-1.923334	-0.531716
C	1.318781	-3.799761	-1.021256
Br	-0.140223	3.053040	0.463099
C	-7.903928	-0.228481	-0.345065
C	-7.034698	-1.203534	0.062070
C	-5.684579	-1.195397	-0.367979
C	-5.240715	-0.158249	-1.231611
C	-6.166140	0.835061	-1.640649
C	-7.463398	0.800776	-1.206982
H	-5.092955	-2.983411	0.699326
H	-8.935420	-0.243224	-0.010011
H	-7.370390	-1.998075	0.721949
C	-4.757647	-2.187927	0.041374
C	-3.886865	-0.135248	-1.647957
H	-5.829432	1.625127	-2.304826
H	-8.162331	1.566359	-1.526360
C	-3.022384	-1.094434	-1.203989
C	-3.454212	-2.142272	-0.360248
H	-3.525726	0.651827	-2.301663
H	-2.738707	-2.880153	-0.010128
O	-1.692330	-0.962837	-1.514370
H	-1.186030	-1.773377	-1.357128
H	1.224366	-3.901862	-2.106384
H	0.414258	-4.202383	-0.564639
H	2.193082	-4.362205	-0.700090
Al	3.590180	-0.401163	-0.123865
Br	2.824128	0.189379	1.982280
Br	3.006181	1.115345	-1.790892
Br	5.799009	-0.988877	-0.187594

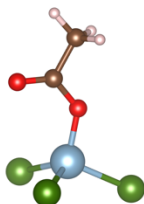
I-4-Br (cation)



I	-1.954288	-0.683216	0.391674
C	-0.704664	0.963012	0.059542

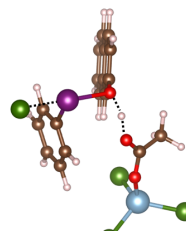
C	-0.818622	2.061935	0.903431
C	0.244883	0.860615	-0.949822
C	0.074782	3.107375	0.715180
H	-1.577182	2.115121	1.674964
C	1.135478	1.913647	-1.102496
H	0.307696	-0.008046	-1.592000
C	1.049198	3.027335	-0.274854
H	0.008825	3.983436	1.349527
H	1.901316	1.853324	-1.866387
H	1.749601	3.844481	-0.403460
Br	-3.884532	0.032863	-1.044146
C	5.442196	0.007853	-1.293970
C	4.888260	0.559814	-0.171258
C	3.704661	0.018233	0.388759
C	3.102047	-1.111875	-0.227726
C	3.703431	-1.666563	-1.384908
C	4.843336	-1.116691	-1.905649
H	3.563105	1.431422	2.022057
H	6.348713	0.426920	-1.715823
H	5.352731	1.417167	0.305756
C	3.097324	0.577150	1.541730
C	1.905201	-1.639338	0.319087
H	3.251953	-2.536748	-1.851027
H	5.297812	-1.548413	-2.790327
C	1.344453	-1.045454	1.410486
C	1.932682	0.067865	2.043398
H	1.429815	-2.503756	-0.133470
H	1.458195	0.518492	2.909956
O	0.094419	-1.499838	1.832626
H	0.020096	-1.443930	2.790015

I-4-Br (anion)

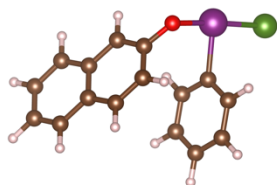


O	-1.307517	-0.032026	1.146309
C	-2.590953	-0.014221	0.857457
O	-3.056461	0.031643	-0.256281
C	-3.453626	-0.064595	2.104180
H	-3.270948	-1.002828	2.634457
H	-3.177060	0.747451	2.780441
H	-4.507645	0.009927	1.838568
Al	0.111202	-0.001305	0.065304
Br	0.175272	-1.896440	-1.299865
Br	0.193572	1.972242	-1.181246
Br	1.936566	-0.054705	1.538469

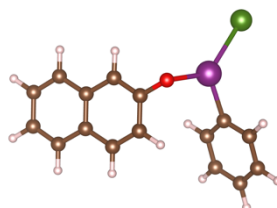
TS3-Br



I	-3.312910	-1.169965	0.784849
C	-2.063635	-0.798769	-0.857253
C	-0.857326	-1.482846	-0.937804
C	-2.435465	0.205297	-1.740508
C	0.020706	-1.120941	-1.950512
H	-0.581220	-2.242615	-0.219466
C	-1.541948	0.540786	-2.750307
H	-3.377850	0.728975	-1.640109
C	-0.318575	-0.110768	-2.845378
H	0.978901	-1.622468	-2.025943
H	-1.798728	1.332509	-3.444225
H	0.389001	0.175625	-3.614679
O	0.039581	-0.849034	1.886981
C	1.188485	-0.352739	1.730564
O	2.043500	-1.016760	1.084273
C	1.546379	0.983446	2.306978
Br	-4.750184	-2.900606	-0.480455
C	-1.081715	5.901326	-1.209357
C	-1.999890	5.551901	-0.256301
C	-1.998150	4.251519	0.305180
C	-1.023829	3.315399	-0.131471
C	-0.085137	3.703756	-1.120178
C	-0.115966	4.966870	-1.646071
H	-3.684114	4.562127	1.626177
H	-1.090869	6.899411	-1.634032
H	-2.741891	6.269575	0.080619
C	-2.942279	3.846619	1.284882
C	-1.027029	2.009133	0.413469
H	0.661161	2.985590	-1.444769
H	0.609823	5.257565	-2.397917
C	-1.954017	1.652486	1.359443
C	-2.925268	2.582301	1.801435
H	-0.303360	1.289429	0.044637
H	-3.637990	2.270338	2.557023
O	-1.992764	0.385795	1.881313
H	-0.894455	-0.158225	2.003163
H	2.419063	0.861013	2.952938
H	0.723163	1.417653	2.871061
H	1.839038	1.664307	1.504106
Al	3.573187	-0.714197	0.119753
Br	5.232885	-0.239638	1.634696
Br	3.014831	1.119449	-1.212008
Br	3.833570	-2.619968	-1.134628

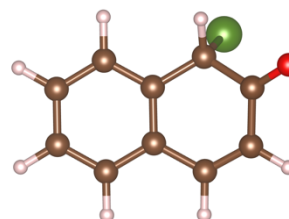
I-5-Br

I	-1.130467	1.637360	-0.852914
C	-0.537830	0.998929	1.054520
C	-1.510886	0.774940	2.016767
C	0.800281	0.692581	1.255812
C	-1.117164	0.226017	3.230575
H	-2.549348	1.021709	1.832825
C	1.170237	0.130537	2.470275
H	1.538393	0.867376	0.484125
C	0.215225	-0.101982	3.451824
H	-1.858658	0.050047	4.001773
H	2.207413	-0.135226	2.638173
H	0.511040	-0.541603	4.397979
Br	-0.798485	4.174283	-0.089292
C	3.632352	-3.973419	0.282147
C	2.357495	-3.938245	0.779244
C	1.381870	-3.078722	0.217817
C	1.739734	-2.247425	-0.877878
C	3.067432	-2.310768	-1.374617
C	3.989281	-3.149244	-0.808577
H	-0.227846	-3.656010	1.545016
H	4.372314	-4.634232	0.721208
H	2.076711	-4.573274	1.614711
C	0.054211	-3.014662	0.714992
C	0.774150	-1.367307	-1.424149
H	3.343247	-1.679879	-2.214685
H	5.001386	-3.184793	-1.198383
C	-0.496188	-1.301105	-0.902336
C	-0.856179	-2.153990	0.175806
H	1.046188	-0.718633	-2.252426
H	-1.867562	-2.085376	0.560709
O	-1.417142	-0.420344	-1.349052

TS4-Br

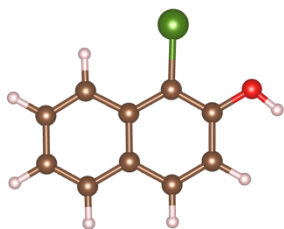
I	-1.766399	-0.546019	-2.555653
C	-2.942029	-1.006139	-0.884129
C	-4.275265	-1.371051	-1.057123
C	-2.330956	-1.012690	0.367617
C	-5.010436	-1.746674	0.058262
H	-4.730896	-1.361234	-2.040390

C	-3.079934	-1.399375	1.470943
H	-1.291052	-0.729173	0.479682
C	-4.412732	-1.763025	1.314817
H	-6.050310	-2.030762	-0.056151
H	-2.619159	-1.415103	2.452005
H	-4.993208	-2.062291	2.180685
Br	-1.797635	2.065318	-3.563109
C	4.053322	-4.417394	0.596885
C	2.704444	-4.631463	0.687092
C	1.815007	-4.062345	-0.256288
C	2.339911	-3.258643	-1.305071
C	3.742664	-3.056389	-1.372094
C	4.576793	-3.620771	-0.446063
H	0.007099	-4.886634	0.603472
H	4.726119	-4.858744	1.324512
H	2.298455	-5.245157	1.486221
C	0.411623	-4.268164	-0.192706
C	1.453669	-2.675502	-2.241851
H	4.145761	-2.445495	-2.174228
H	5.647853	-3.459889	-0.510591
C	0.099250	-2.904223	-2.167154
C	-0.422907	-3.711101	-1.117321
H	1.839501	-2.052269	-3.042578
H	-1.494645	-3.879438	-1.081395
O	-0.739357	-2.384481	-3.086239

I-6-Br

Br	1.555836	-1.620144	1.136768
C	-2.840058	-1.041955	-0.470293
C	-1.485001	-1.293335	-0.637490
C	-0.543559	-0.324508	-0.312092
C	-0.964840	0.918666	0.181459
C	-2.328614	1.157817	0.353196
C	-3.262502	0.184368	0.031188
C	0.919434	-0.597036	-0.459100
C	0.022585	1.957154	0.471955
C	1.820055	0.635555	-0.524835
H	1.149524	-1.251822	-1.296275
H	-3.566505	-1.804511	-0.728778
H	-1.152079	-2.256691	-1.011520
H	-2.656489	2.119628	0.735795
H	-4.320369	0.381218	0.166154
H	-0.342462	2.875623	0.924004
C	1.319808	1.837357	0.162666
H	2.031097	2.638731	0.324789
O	2.873258	0.601446	-1.112606

Product



C	3.511048	-0.859391	-0.000241
C	3.134105	0.454330	-0.000328
C	1.765423	0.820195	-0.000241
C	0.768411	-0.195883	-0.000073
C	1.193438	-1.549314	0.000014
C	2.524374	-1.867740	-0.000061
H	2.130224	2.951394	-0.000436
H	4.561717	-1.128547	-0.000310
H	3.881928	1.241736	-0.000452
C	1.368465	2.178492	-0.000306
C	-0.598928	0.199277	0.000004
H	0.450149	-2.336341	0.000156
H	2.823610	-2.910644	0.000025
C	-0.957302	1.527127	-0.000044
C	0.049516	2.522336	-0.000215
H	-0.243616	3.569295	-0.000288
O	-2.266093	1.864422	0.000029
H	-2.356366	2.819031	0.000301
Br	-1.990577	-1.099939	0.000278

4. Alternative mechanisms explored for the chlorination of 2-naphthol

a. The PIFA- AlCl_3 (1:1) system

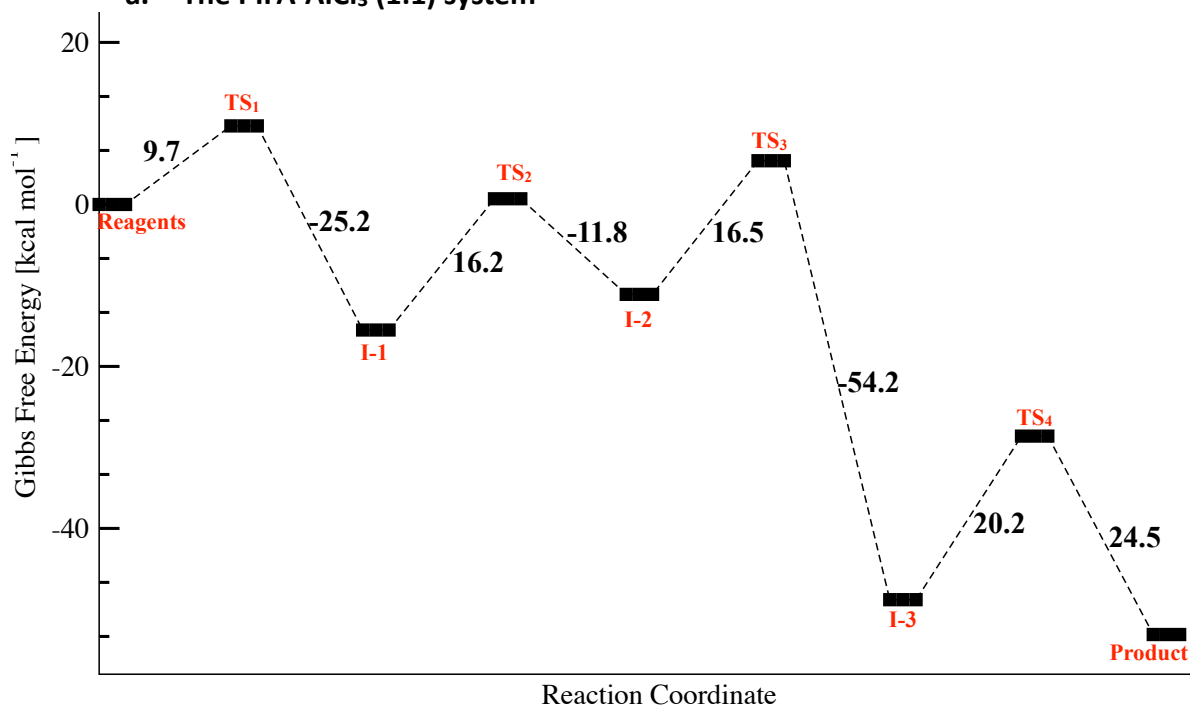


Figure S1. Energy profile for the chlorination of 2-naphthol in the presence of PIFA and AlCl_3 (1:1). Values represent the Gibbs free energy (in kcal/mol).

Table S1. Structures of intermediates and transition states with their corresponding Gibbs free energies (in kcal/mol) for the chlorination of 2-naphthol in the presence of PIFA- AlCl_3 (1:1).

Step	Intermediate (I) / Transition State (TS)	ΔG [kcal/mol]
Reagents		0.0
TS ₁		9.7
I-1		-15.5

TS ₂		0.7
I-2		-11.1
TS ₃		5.4
I-3		-48.8
TS ₄		-28.6
Product		-53.1

4. Alternative mechanisms explored for the chlorination of 2-naphtol

b. The PIFA- AlCl_3 (1:2) system via the formation of PhICl_2

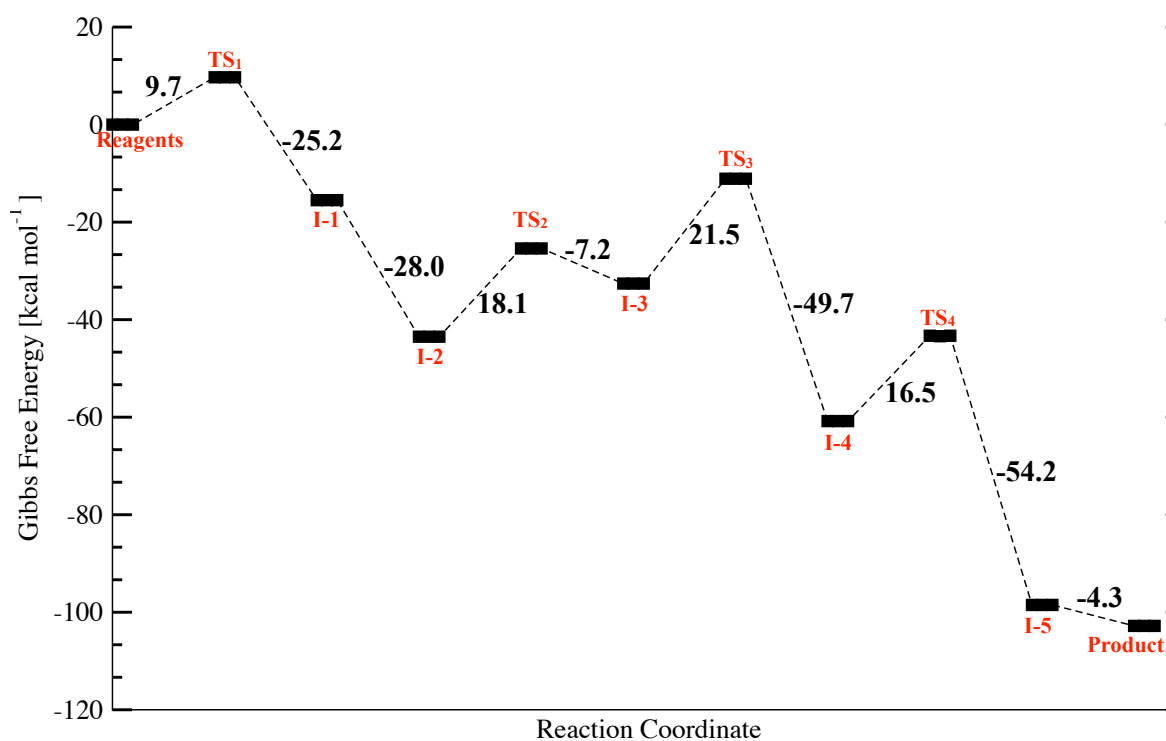
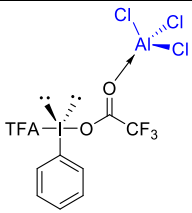
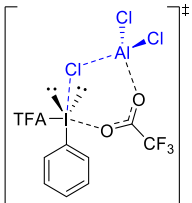


Figure S3. Energy profile for the chlorination of 2-naphthol in the presence of PIFA and AlCl_3 (1:2) via the formation of PhICl_2 . Values represent the Gibbs free energy (in kcal/mol).

Table S3. Structures of intermediates and transition states with their corresponding Gibbs free energies (in kcal/mol) for the chlorination of 2-naphthol in the presence of PIFA - AlCl_3 (1:2) via the formation of PhICl_2 .

Step	Intermediate (I) / Transition State (TS)	ΔG [kcal/mol]
Reagents		0.0
TS1		9.7

TFOAc- AlCl ₂		
I-1		-15.5
I-2		-43.5
TS ₂		-25.4
I-3		-32.6
TS ₃		-11.1
I-4		-60.8
TS ₄		-44.3
I-5		-98.5
Product		1-Cl-2-NpOH

4. Alternative mechanisms explored for the chlorination of 2-naphtol
 c. The PIDA-AlCl₃ (1:2) system via the formation of PhICl₂

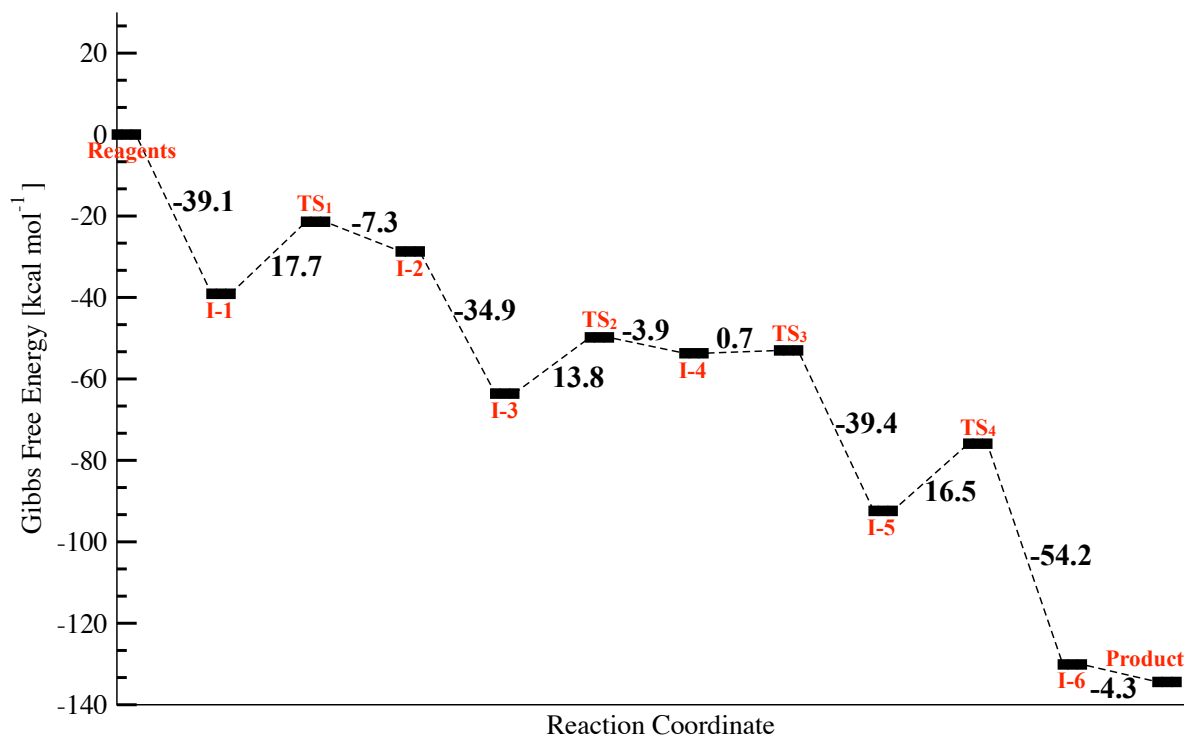
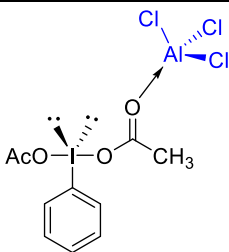
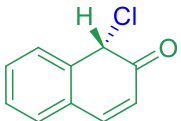
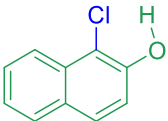


Figure S4. Energy profile for the chlorination of 2-naphthol in the presence of PIDA and AlCl₃ (1:2) via the formation of PhICl₂. Values represent the Gibbs free energy (in kcal/mol).

Table S4. Structures of intermediates and transition states with their corresponding Gibbs free energies (in kcal/mol) for the chlorination of 2-naphthol in the presence of PIDA - AlCl₃ (1:2) via the formation of PhICl₂.

Step	Intermediate (I) / Transition State (TS)	ΔG [kcal/mol]
Reagents		0.0

I-1		-39.1
TS ₁		-21.4
I-2		-28.7
I-3		-63.6
TS ₂		-36.5
I-4		-57.1
TS ₃		-35.6
I-5		-85.4
TS ₄		-68.9

I-6		-123.1
Product		-127.3

5. Alternative mechanisms explored for the bromination of 2-naphthol
 a. The PIFA-AlBr₃ (1:2) system

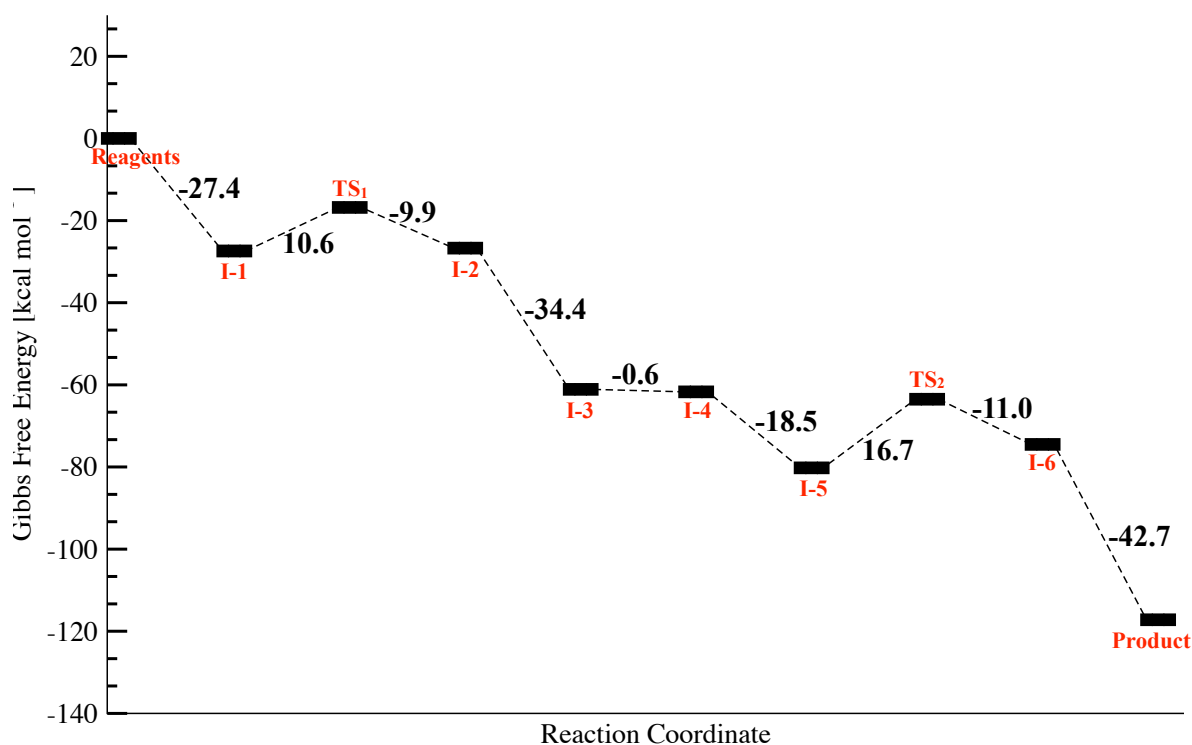
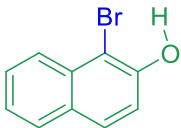


Figure S5. Energy profile for the bromination of 2-naphthol in the presence of PIFA and AlBr₃ (1:2). Values represent the Gibbs free energy (in kcal/mol).

Table S5. Structures of intermediates and transition states with their corresponding Gibbs free energies (in kcal/mol) for the bromination of 2-naphthol in the presence of PIFA - AlBr₃ (1:2).

Step	Intermediate (I) / Transition State (TS)	ΔG [kcal/mol]
Reagents		0.0
I-1		-27.4

TS ₁		-16.8
TFOAc-AlBr ₂		
I-2		-26.7
I-3		-61.1
I-4		-61.7
I-5		-80.2
TS ₂		-63.5
I-6		-74.5

Product	 <p>The image shows the chemical structure of 1-bromo-2-naphthol. It consists of a naphthalene ring system with a bromine atom (Br) at the 1-position and a hydroxyl group (-OH) at the 2-position. The bromine atom is colored blue, and the hydrogen atom of the hydroxyl group is colored green.</p>	1-Br-2-NpOH
---------	--	-------------

5. Alternative mechanisms explored for the bromination of 2-naphtol
 b. The PIFA- AlBr_3 (1:2) system via the formation of PhIBr_2

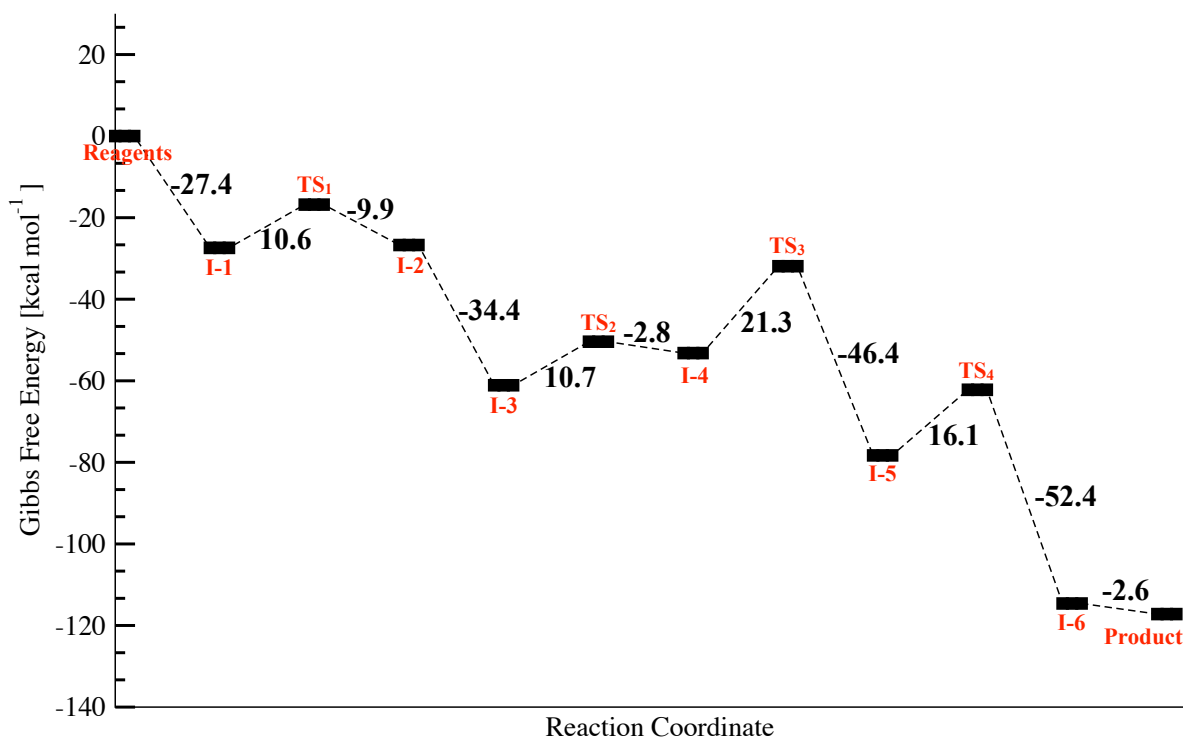
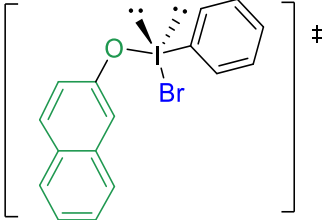
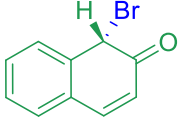
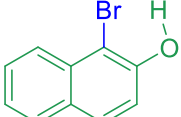


Figure S6. Energy profile for the bromination of 2-naphtol in the presence of PIFA and AlBr_3 (1:2). Values represent the Gibbs free energy (in kcal/mol) via the formation of PhIBr_2 .

Table S6. Structures of intermediates and transition states with their corresponding Gibbs free energies (in kcal/mol) for the chlorination of 2-naphtol in the presence of PIFA - AlBr_3 (1:2), via the formation of PhIBr_2 .

Step	Intermediate (I) / Transition State (TS)	ΔG [kcal/mol]
Reagents		0.0
I-1		-27.4

TS ₁		-16.8
I-2		-26.7
I-3		-61.1
TS ₂		-50.4
I-4		-53.2
TS ₃		-31.9
I-5		-78.3

TS ₄		-62.2
I-6		-114.6
Product		-117.2

5. Alternative mechanisms explored for the bromination of 2-naphthol

c. The PIDA-AlBr₃ (1:2) system via the formation of PhIBr₂

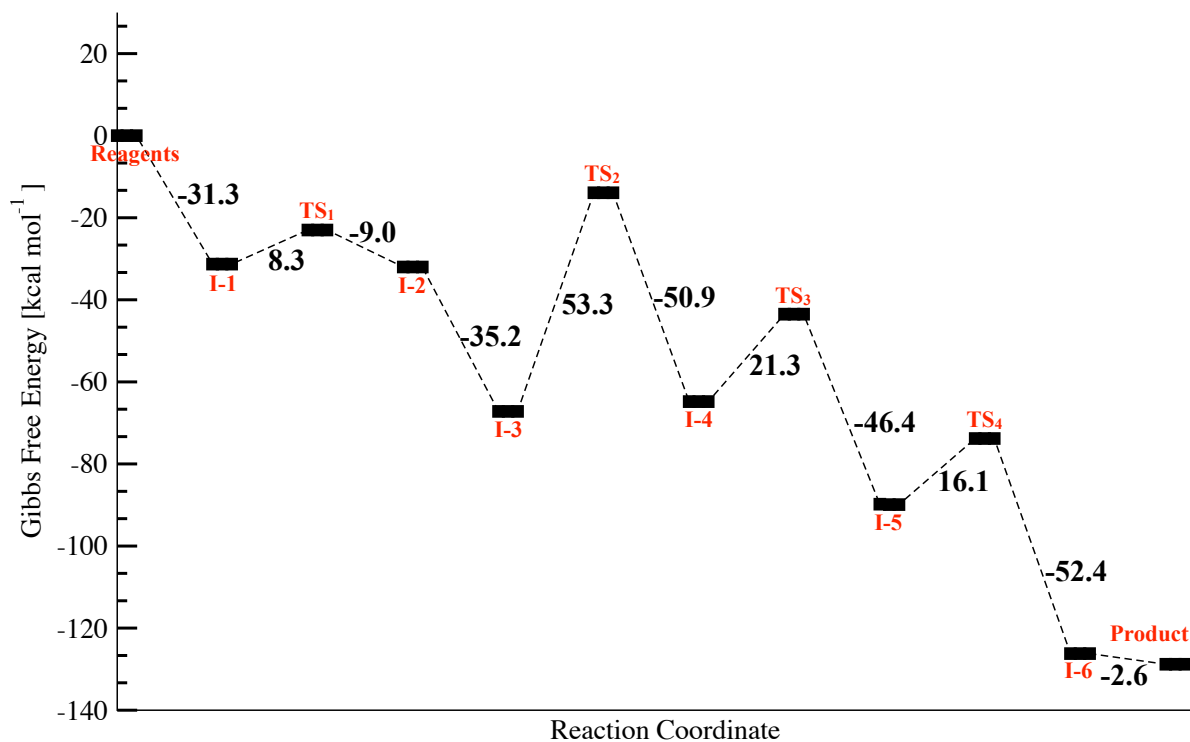


Figure S7. Energy profile for the bromination of 2-naphthol in the presence of PIDA and AlBr₃ (1:2), via the formation of PhIBr₂, values represent the Gibbs free energy (in kcal/mol)

Table S7. Structures of intermediates and transition states with their corresponding Gibbs free energies (in kcal/mol) for the bromination of 2-naphthol in the presence of PIDA - AlBr₃ (1:2), via the formation of PhIBr₂.

Step	Intermediate (I) / Transition State (TS)	ΔG [kcal/mol]
Reagents		0.0
I-1		-31.3
TS ₁		-23.0

I-2		-32.0
I-3		-67.2
TS ₂		-13.9
I-4		-64.8
TS ₃		-3.5
I-5		-89.9
TS ₄		-73.8
I-6		-126.2
Product		1-Br-2-NpOH